



COMPACT SERIES SAFE

BURGLAR & FIRE RESISTANCE



MOEM Compact series safe is designed for medium range protection for your valuables and important documents against burglary and fire. Compact series safe is designed for easy operations and everyday use in small businesses, homes and other commercial applications.

FEATURES

DOOR & BODY

The overall thickness of door measures 100mm with an effective specially formulated thermo-alloy MT metal-mix barrier material protective thickness of 50mm. The design form an integral part of the door structure strength together with locking mechanism. The overall thickness of body measures 65mm encased with MOEM specially formulated thermo-alloy MT metal-mix barrier material composite.

BOLT-WORK & LOCKING MECHANISM

Compact series safe is designed with a 3 way running bolt-work locking system. The door is further secured by full vertical interlocking system. Bolt measures 25mm in diameter.

Compact series safe comes complete with 3 wheel keyless combination lock (1,000,000 combination variation) and a key lock. Other locking options such as digital lock available as accessories. (optional).

INTERNAL FITTINGS

Compact series safe comes complete with one adjustable steel

shelf. Model MS200, MS300 and MS300T comes complete with a lockable internal bottom drawer.

FIRE RESISTANCE

Safe is tested for 30 minutes in accordance to JIS 1037:1989 (Japanese Industrial Standard).

(*refer test report)

Door Protective Thickness 50mm

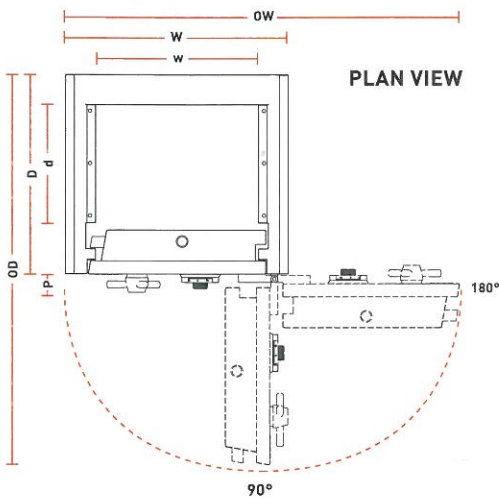
Body Protective Thickness 65mm

Thermo-Alloy MT Metal-Mix Barrier Material

3-Way Running Bolt

Internal Fittings

Fire Resistance



| MODEL | EXTERNAL (mm and inches) | | | | DOOR @ 90° | DOOR @ 180° | INTERNAL (mm) | | | | WEIGHT |
|--------|--------------------------|-----------|-----------|-------|------------|-------------|---------------|-------|-----|-----|--------|
| | (H) | (W) | (D) | (D+P) | (OD) | (OW) | (h) | (had) | (w) | (d) | (KGS) |
| MS100 | 385 (15.2") | 533 (21") | 457 (18") | 502 | 920 | 970 | 245 | — | 393 | 270 | 170 |
| MS200 | 584 (23") | 508 (20") | 533 (21") | 578 | 985 | 925 | 445 | 318 | 368 | 360 | 250 |
| MS300 | 685 (27") | 508 (20") | 533 (21") | 578 | 985 | 925 | 545 | 420 | 368 | 360 | 285 |
| MS100T | 508 (20") | 533 (21") | 457 (18") | 502 | 920 | 970 | 245 | 200 | 393 | 270 | 210 |
| MS300T | 813 (32.1") | 508 (20") | 533 (21") | 578 | 985 | 925 | 545 | 395 | 368 | 360 | 330 |

EXTERNAL: (H) — HEIGHT / (W) — WIDTH / (D) — DEPTH / (D+P) — OVERALL DEPTH
INTERNAL: (h) — height / (w) — width / (d) — depth / (had) — height above drawer



MS100T & MS300T (DRAWER TRAP SYSTEM)

Drawer trap system allows deposit of cash and documents without having to open the main safe door. System is fitted with an anti-fishing plate to deter fishing of content from the safe. Drawer trap is also lockable. These features are ideally suited for retailers i.e kiosks, gasoline stations, restaurants, mini-marts and others where there is turnover of employee shifts and cash turnover.

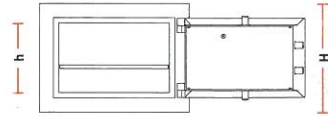
ACCESSORIES

Digital lock / Envelope slot / *Other special fittings
Standard colour: Light Grey

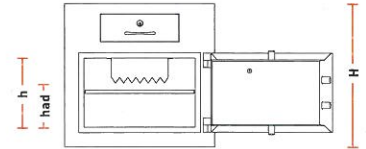
- * Safe comes complete with 1 adjustable shelf
- * MS200, MS300 & MS300T come complete with internal drawer
- * Ensure door able to open 180° to maximize usage & drawer usage
- * Recommended to allow 25mm gap on each side
- * Internal height MS100T & MS300T is measured up to anti-fishing plate
- * D+P-Overall depth + handle
- * OD-Overall depth door @90 °
- * OW-Overall width door @180 °
- * Had-Height above drawer *except MS100T
- * Floor bolting to be specified before manufacturing
- * Measurement in inches (") as guide
- * Weight ±10%



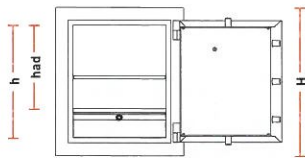
MS100



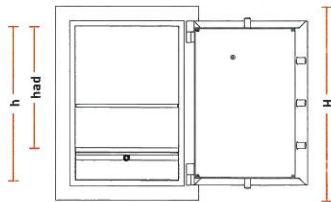
MS100T



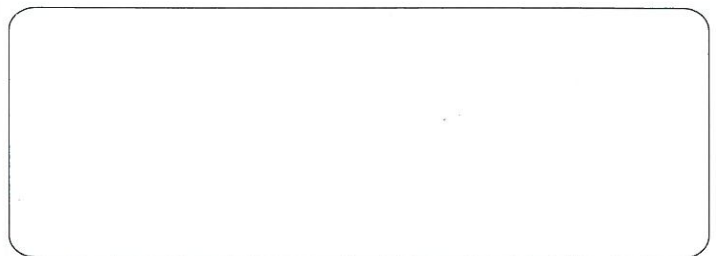
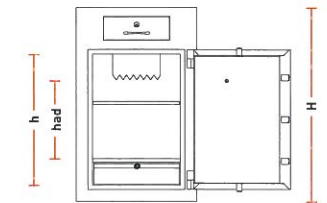
MS200



MS300



MS300T



THIS CATALOGUE HAS BEEN DESIGNED FOR DISTRIBUTION THROUGHOUT MANY INTERNATIONAL MARKETS. THUS, SOME SPECIFICATIONS, COMPARISONS AND INFORMATION SET FORTH HEREIN MAY NOT APPLY IN ALL MARKETS. MOEM'S POLICY IS ONE OF CONTINUOUS IMPROVEMENT, THE RIGHT TO CHANGE SPECIFICATIONS WITHOUT PRIOR NOTICE IS RESERVED.